

SNAP ON CONDUIT COUPLERS



Distributors made of Polyamide can be used instead of a distribution box. These special connectors are used to clamp standard corrugated conduits. They can be configured into the basic shapes of Y (TYC), T (TTC), V(TVC) and straight through (TNSC). They are free for Halogen Phosphorous Cadmium.

| Technical Details : | |
|---------------------|------------------------------|
| Material | Polyamide 6 |
| Colour | Black |
| Temperature Range | -40° C to +105° C Continuous |
| Protection Class | IP 67 |

| Cat. No. for TYC Configuration | Cat. No. for TTC Configuration | Cat. No. for TVC Configuration | Cat. No. for TNSC Configuration | Suitable for Conduit Size | | | Standard Pack (pieces) |
|--------------------------------|--------------------------------|--------------------------------|---------------------------------|---------------------------|----|----|------------------------|
| | | | | A | B | C | |
| TYC101010 | TTC101010 | TVC101010 | - | 10 | 10 | 10 | 10 |
| TYC121010 | TTC121010 | TVC121010 | - | 12 | 10 | 10 | 10 |
| TYC121210 | TTC121210 | TVC121210 | - | 12 | 12 | 10 | 10 |
| TYC121212 | TTC121212 | TVC121212 | - | 12 | 12 | 12 | 10 |
| TYC161010 | TTC161010 | TVC161010 | - | 16 | 10 | 10 | 10 |
| TYC161210 | TTC161210 | TVC161210 | - | 16 | 12 | 10 | 10 |
| TYC161212 | TTC161212 | TVC161212 | - | 16 | 12 | 12 | 10 |
| TYC161216 | TTC161216 | TVC161216 | - | 16 | 12 | 16 | 10 |
| TYC161616 | TTC161616 | TVC161616 | - | 16 | 16 | 16 | 10 |
| TYC222222 | TTC222222 | TVC222222 | - | 22 | 22 | 22 | 10 |
| TYC282222 | TTC282222 | TVC282222 | - | 28 | 22 | 22 | 10 |
| TYC282822 | TTC282822 | TVC282822 | - | 28 | 28 | 22 | 10 |
| TYC282828 | TTC282828 | TVC282828 | - | 28 | 28 | 28 | 10 |
| - | - | - | TNSC10B | 10 | 10 | - | 10 |
| - | - | - | TNSC12B | 12 | 12 | - | 10 |
| - | - | - | TNSC16B | 16 | 16 | - | 10 |
| - | - | - | TNSC22B | 22 | 22 | - | 10 |
| - | - | - | TNSC28B | 28 | 28 | - | 10 |
| - | - | - | TNSC36B | 36 | 36 | - | 10 |
| - | - | - | TNSC48B | 48 | 48 | - | 10 |



CONNECTORS FOR FITTING

CONDUITS TO SENSORS



These connectors are used to connect conduits to standard proximity sensors. They are free for Halogen Phosphorous Cadmium.

| Technical Details : | |
|---------------------|--|
| Material | High Quality Polycarbonate |
| Colour | Transparent White |
| Temperature Range | -40° C to +105° C Continuous +150° C Short Term |
| Protection Class | IP 67 |

| Proximity Sensor Size | Suitable for Conduit Size | Cat. No. | Total Length (mm) | Standard Pack (pieces) |
|-----------------------|---------------------------|----------|-------------------|------------------------|
| M8x1 | 10 | TIS-M08T | 61.5 | 100 |
| M12x1 | 10 | TIS-M12T | 61.5 | 50 |
| M18x1 | 10 | TIS-M18T | 61.5 | 50 |
| M30x1.5 | 10 | TIS-M30T | 61.5 | 30 |



These manifolds are used to join two or three flexible Conduits of the same size or of different sizes with inside or outside gripping. They are available in Straight, Elbow, 'T' and 'Y' shapes.

| Technical Details : | |
|---------------------|---|
| Material | Polyamide 66 (PA) |
| Protection Class | RAL 9005 (Black) |
| Temperature Range | -40° C to +135° C Continuous, +150° C Short Term |

Y & T CONDUIT COUPLERS

WITH CLAMP LOCKS



STC
(Inside Grip)



B
STC
(Outside Grip)



A
SYC
(Inside Grip)

Y & T Conduit Couplers

| Cat. No. | Type of Gripping | Suitable for Conduit OD | | | Standard Pack (pieces) |
|------------------|------------------|-------------------------|-------------|-------------|------------------------|
| | | A Ø mm | B Ø mm | C Ø mm | |
| SYC070404 | OUTSIDE | 10 | 7.1 | 7.1 | 50 |
| SYC070707 | OUTSIDE | 10 | 10 | 10 | 50 |
| SYC101010 | INSIDE | 13 | 13 | 13 | 50 |
| SYC121010 | INSIDE | 15.8 | 13 | 13 | 50 |
| SYC121210 | INSIDE | 15.8 | 15.8 | 13 | 50 |
| SYC161010 | INSIDE | 21.2 | 13 | 13 | 50 |
| SYC161210 | INSIDE | 21.2 | 15.8 | 13 | 50 |
| SYC161212 | INSIDE | 21.2 | 15.8 | 15.8 | 50 |
| SYC161610 | INSIDE | 21.2 | 21.2 | 13 | 50 |
| SYC161612 | INSIDE | 21.2 | 21.2 | 15.8 | 50 |
| SYC221616 | INSIDE | 25.4 | 21.2 | 21.2 | 50 |
| SYC222216 | INSIDE | 25.4 | 25.4 | 21.2 | 50 |
| SYC222222 | INSIDE | 25.4 | 25.4 | 25.4 | 50 |
| STC070707 | OUTSIDE | 10 | 10 | 10 | 50 |
| STC100707 | OUTSIDE | 13 | 10 | 10 | 50 |
| STC100810 | OUTSIDE | 13 | 11.7 | 13 | 50 |
| STC101007 | OUTSIDE | 13 | 13 | 10 | 50 |
| STC101010 | OUTSIDE | 13 | 13 | 13 | 50 |
| STC120810 | OUTSIDE | 15.8 | 11.7 | 13 | 50 |
| STC120712 | OUTSIDE | 15.8 | 10 | 15.8 | 50 |
| STC120812 | OUTSIDE | 15.8 | 11.7 | 15.8 | 50 |
| STC121007 | OUTSIDE | 15.8 | 13 | 10 | 50 |
| STC121010 | OUTSIDE | 15.8 | 13 | 13 | 50 |
| STC121012 | OUTSIDE | 15.8 | 13 | 15.8 | 50 |
| STC121207 | OUTSIDE | 15.8 | 15.8 | 10 | 50 |
| STC121210 | OUTSIDE | 15.8 | 15.8 | 13 | 50 |
| STC121212 | OUTSIDE | 15.8 | 15.8 | 13 | 50 |
| STC161012 | OUTSIDE | 21.2 | 13 | 15.8 | 50 |
| STC160712 | OUTSIDE | 21.2 | 10 | 15.8 | 50 |
| STC160716 | OUTSIDE | 21.2 | 10 | 21.2 | 50 |
| STC160816 | OUTSIDE | 21.2 | 11.7 | 21.2 | 50 |
| STC161016 | OUTSIDE | 21.2 | 13 | 21.2 | 50 |
| STC161212 | OUTSIDE | 21.2 | 15.8 | 15.8 | 50 |
| STC161216 | OUTSIDE | 21.2 | 15.8 | 21.2 | 50 |
| STC161607 | OUTSIDE | 21.2 | 21.2 | 10 | 50 |
| STC161612 | OUTSIDE | 21.2 | 21.2 | 15.8 | 50 |
| STC161616 | INSIDE | 21.2 | 21.2 | 21.2 | 50 |
| STC162216 | OUTSIDE | 21.2 | 25.4 | 21.2 | 50 |
| STC220822 | OUTSIDE | 25.4 | 11.7 | 25.4 | 50 |
| STC221022 | OUTSIDE | 25.4 | 13 | 25.4 | 50 |
| STC221212 | OUTSIDE | 25.4 | 15.8 | 15.8 | 50 |
| STC221216 | OUTSIDE | 25.4 | 15.8 | 21.2 | 50 |
| STC221612 | OUTSIDE | 25.4 | 21.2 | 15.8 | 50 |
| STC221222 | OUTSIDE | 25.4 | 15.8 | 25.4 | 50 |
| STC222216 | OUTSIDE | 25.4 | 21.2 | 21.2 | 50 |
| STC222222 | OUTSIDE | 25.4 | 25.4 | 25.4 | 50 |



CONDUIT COUPLERS WITH CLAMP

LOCKS - STRAIGHT & ELBOW

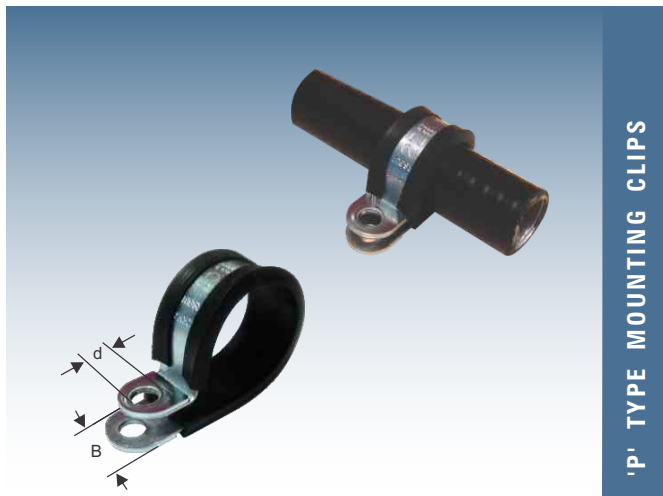


These manifolds are used to join two or three flexible Conduits of the same size or of different sizes with outside gripping. They are available in Straight, Elbow, 'T' and 'Y' shapes.

| Technical Details : | |
|---------------------|---|
| Material | Polyamide 66 (PA) |
| Protection Class | RAL 9005 (Black) |
| Temperature Range | -40° C to +135° C Continuous, +150° C Short Term |

Straight & Elbow Conduit Coupler

| Cat. No. | Type of Gripping | Suitable for Conduit OD | | Standard Pack (pieces) |
|----------|------------------|-------------------------|--------|------------------------|
| | | A Ø mm | B Ø mm | |
| SSC0707 | OUTSIDE | 10 | 10 | 50 |
| SSC1007 | OUTSIDE | 13 | 10 | 50 |
| SSC1010 | OUTSIDE | 13 | 13 | 50 |
| SSC1210 | OUTSIDE | 15.8 | 13 | 50 |
| SSC1212 | OUTSIDE | 15.8 | 15.8 | 50 |
| SSC1612 | OUTSIDE | 21.2 | 15.8 | 50 |
| SSC1616 | OUTSIDE | 21.2 | 21.2 | 50 |
| SEC1010 | OUTSIDE | 13 | 13 | 50 |
| SEC1212 | OUTSIDE | 15.8 | 15.8 | 50 |
| SEC1612 | OUTSIDE | 21.2 | 15.8 | 50 |
| SEC1616 | OUTSIDE | 21.2 | 21.2 | 50 |



'P' TYPE MOUNTING CLIPS



'P' type mounting clips are ideal elements for retaining / holding pipes, cables, cable harnesses, hoses etc. These 'P' clips act as form fitting adjustable bands for ease of assembly & installation. The band ends of these clips are reinforced to prevent any tearing or loosening due to high mechanical loads. These galvanized steel, 'P' clips are fitted with EPDM liners which help achieve a tighter grip on the cable / conduit & also act as dampers for sound & vibration.

| Technical Details : | |
|---------------------|---|
| Material | Clip - Zinc Plated, Galvanised Steel |
| Profile | EPDM |
| Temperature Range | -40° C to +120° C |

| Size | Cat. No. | Nominal ID (mm) | B Width (mm) | d Screw Size | Standard Pack (pieces) |
|------------|----------|-----------------|--------------|--------------|------------------------|
| 0542-06-12 | FHC-06 | 06 | 12 | M5 | 50 |
| 0542-08-12 | FHC-08 | 08 | 12 | M5 | 50 |
| 0542-10-12 | FHC-10 | 10 | 12 | M5 | 50 |
| 0542-12-12 | FHC-12 | 12 | 12 | M5 | 50 |
| 0542-15-15 | FHC-15 | 15 | 15 | M6 | 50 |
| 0542-22-15 | FHC-22 | 22 | 15 | M6 | 50 |
| 0542-30-15 | FHC-30 | 30 | 15 | M6 | 50 |
| 0542-35-15 | FHC-35 | 35 | 15 | M6 | 50 |
| 0542-40-20 | FHC-40 | 40 | 20 | M8 | 50 |

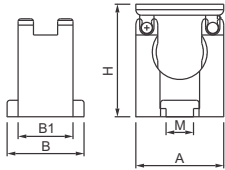


Mounting Clips are used for supporting conduits. These clips are made of High Quality Impact Resistant Polyamide. The mounting clips are stackable and are fixed with the help of screws on to the panel or equipment surface.

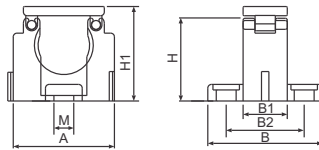
MOUNTING CLIPS



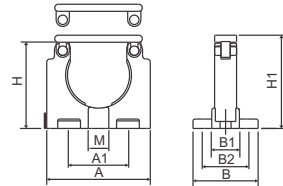
| Technical Details : | |
|---------------------|---|
| Material | Polyamide 6 |
| Colour | RAL 7001 (Grey) RAL 9005 (Black) |
| Temperature Range | -40° C to +105° C Continuous, +150° C Short Term |



For NFH-7/10



For NFH-12/16/22



For NFH-28/36/48/56/70/95

| Suitable for Conduit Size | Cat. No. Black | Cat. No. Grey | Dimensions | | | | | | | | |
|---------------------------|----------------|---------------|------------|------|------|----|------|---|-------|-------|--------|
| | | | A | A1 | B | B1 | B2 | H | H1 | M | |
| 7 | NFH-07B | NFH-07G | 16 | - | 14.5 | 10 | - | - | 18 | 20.7 | 1 X M4 |
| 10 | NFH-10B | NFH-10G | 18 | - | 15 | 10 | - | - | 21.7 | 24.2 | 1 X M4 |
| 12 | NFH-12B | NFH-12G | 27.5 | - | 31.2 | 14 | 21.2 | - | 22.5 | 25.7 | 3 X M5 |
| 16 | NFH-16B | NFH-16G | 34.2 | - | 36 | 14 | 24 | - | 29.5 | 33 | 3 X M5 |
| 22 | NFH-22B | NFH-22G | 45.5 | - | 38 | 14 | 24 | - | 38 | 42.2 | 3 X M6 |
| 28 | NFH-28B | NFH-28G | 55 | 34 | 37 | 14 | 25 | - | 45.3 | 49.8 | 5 X M6 |
| 36 | NFH-36B | NFH-36G | 66 | 37.5 | 41.5 | 14 | 27 | - | 54.3 | 59.5 | 5 X M6 |
| 48 | NFH-48B | NFH-48G | 84.8 | 56 | 41.5 | 14 | 27 | - | 66.8 | 73.1 | 5 X M6 |
| 56 | NFH-56B | NFH-56G | 98.6 | 64.6 | 52 | 19 | 35.5 | - | 79.7 | 86.3 | 5 X M6 |
| 70 | NFH-70B | NFH-70G | 121 | 79 | 63 | 23 | 43 | - | 97.6 | 105.8 | 5 X M6 |
| 95 | NFH-95B | NFH-95G | 155 | 103 | 82 | 30 | 56 | - | 125.8 | 136.3 | 5 X M6 |



Tube End caps provide an IP66 covering at the end of corrugated tubes. The cap can be cut to accommodate pass through of different size wires.

TUBE END CAPS



| Technical Details : | |
|---------------------|---------------------------|
| Material | High Quality Rubber (NBR) |
| Colour | Black |
| Protection Class | IP 66 |

| Suitable for Conduit Size | Cat. No. | Inner Diameter (mm) | Cable Range ø min - ø max (mm) | Total Length (mm) |
|---------------------------|----------|---------------------|-----------------------------------|-------------------|
| 7 | FEC-07B | 10.0 | 2 - 7 | 24.0 |
| 10 | FEC-10B | 12.5 | 3 - 10 | 33.0 |
| 12 | FEC-12B | 15.8 | 4.2 - 12 | 33.0 |
| 16 | FEC-16B | 21.2 | 6 - 16 | 34.5 |
| 22 | FEC-22B | 28.5 | 6 - 22 | 41.0 |
| 28 | FEC-28B | 34.5 | 6 - 28 | 43.0 |
| 36 | FEC-36B | 42.5 | 6 - 36 | 58.5 |
| 48 | FEC-48B | 54.5 | 6 - 48 | 58.5 |
| 56 | FEC-56B | 67.2 | 9 - 56 | 71 |
| 70 | FEC-70B | 82.5 | 10 - 70 | 86 |
| 95 | FEC-95B | 106.0 | 13 - 95 | 110 |



METAL FERRULES FOR

LIQUID TIGHT CONDUITS



These metal ferrules are used in the combination with clamping ring to maintain the IP 67 grade of protection for liquid tight PVC coated smooth conduits. They are used as cover of conduit ends to avoid cable damage.

Technical Details :

| | |
|-----------|--|
| Material | Nickel Plated Brass for SLI Conduits Zinc Plated Steel for SLB Conduits |
| Colour | Metallic |
| Approvals | |

| Conduit Size | Cat. No. Nickel Plated Brass | Cat. No. Zinc Plated Steel | Standard Pack (Pieces) |
|--------------|---------------------------------|-------------------------------|---------------------------|
| 3/8" | AFER-03 | BFER-03 | 25 |
| 1/2" | AFER-04 | BFER-04 | 25 |
| 3/4" | AFER-05 | BFER-05 | 25 |
| 1" | AFER-06 | BFER-06 | 5 |
| 1 1/4" | AFER-07 | - | 5 |
| 1 1/2" | AFER-08 | - | 5 |
| 2" | AFER-09 | - | 2 |



METAL CLAMPING RING FOR

SLI & SLB CONDUITS



For using liquid tight conduit glands with SLI & SLB metallic conduits it is recommended to replace the standard polyamide clamping ring inside these glands with metal clamping rings. These clamping rings also increase the pull out strength of the conduit.

Technical Details :

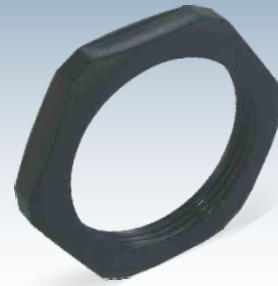
| | |
|-----------|--|
| Material | Nickel Plated Brass for SLI Conduits Zinc Plated Steel for SLB Conduits |
| Colour | Metallic |
| Approvals | |

| Conduit Size | Cat. No. Nickel Plated Brass | Cat. No. Zinc Plated Steel | Standard Pack (Pieces) |
|--------------|---------------------------------|-------------------------------|---------------------------|
| 3/8" | ACRI-03 | ACRB-03 | 50 |
| 1/2" | ACRI-04 | ACRB-04 | 50 |
| 3/4" | ACRI-05 | ACRB-05 | 25 |
| 1" | ACRI-06 | ACRB-06 | 10 |
| 1 1/4" | ACRI-07 | ACRB-07 | 5 |
| 1 1/2" | - | ACRB-08 | 5 |
| 2" | - | ACRB-09 | 4 |



In certain applications, installing cable glands directly on enclosure or equipment wall surfaces is not possible as the entry holes are not threaded. In such situations Hexagonal Lock Nuts are used to secure the cable glands.

POLYAMIDE LOCK NUTS



| Technical Details : | |
|---------------------|---|
| Material | Polyamide 6 30% glass fibre reinforced |
| Colour | RAL 7001 (Grey) RAL 9005 (Black) |
| Threads available | Pg, Metric, NPT & PF |

Pg Thread

| For Gland Size | Cat. No. Grey | Cat. No. Black | (mm) | Height (mm) | Standard Pack (pieces) |
|----------------|---------------|----------------|------|-------------|------------------------|
| Pg 7 | FLN-P07G | FLN-P07B | 19 | 5 | 50 |
| Pg 9 | FLN-P09G | FLN-P09B | 22 | 5 | 50 |
| Pg 11 | FLN-P11G | FLN-P11B | 24 | 5 | 50 |
| Pg 13.5 | FLN-P13G | FLN-P13B | 27 | 6 | 50 |
| Pg 16 | FLN-P16G | FLN-P16B | 30 | 6 | 50 |
| Pg 21 | FLN-P21G | FLN-P21B | 36 | 7 | 25 |
| Pg 29 | FLN-P29G | FLN-P29B | 46 | 7 | 20 |
| Pg 36 | FLN-P36G | FLN-P36B | 60 | 8 | 10 |
| Pg 48 | FLN-P48G | FLN-P48B | 70 | 8 | 5 |

Metric Thread

| For Gland Size | Cat. No. Grey | Cat. No. Black | (mm) | Height (mm) | Standard Pack (pieces) |
|----------------|---------------|----------------|------|-------------|------------------------|
| M 12 x 1.5 | FLN-M10G | FLN-M10B | 18 | 5 | 50 |
| M 16 x 1.5 | FLN-M12G | FLN-M12B | 22 | 5 | 50 |
| M 20 x 1.5 | FLN-M16G | FLN-M16B | 26 | 6 | 50 |
| M 25 x 1.5 | FLN-M22G | FLN-M22B | 32 | 6 | 50 |
| M 32 x 1.5 | FLN-M28G | FLN-M28B | 41 | 7 | 25 |
| M 40 x 1.5 | FLN-M36G | FLN-M36B | 50 | 7 | 10 |
| M 50 x 1.5 | FLN-M48/50G | FLN-M48/50B | 60 | 8 | 10 |
| M 63 x 1.5 | FLN-M48/63G | FLN-M48/63B | 75 | 8 | 5 |

NPT Thread

| Size | Cat. No. Grey | Cat. No. Black | (mm) | Height (mm) | Standard Pack (pieces) |
|----------|---------------|----------------|------|-------------|------------------------|
| NPT 1/2" | FLN-N10G | FLN-N10B | 27.2 | 5.6 | 50 |
| NPT 1/2" | FLN-N12G | FLN-N12B | 27.2 | 5.6 | 50 |
| NPT 1/2" | FLN-N16G | FLN-N16B | 27.2 | 5.6 | 50 |
| NPT 3/4" | FLN-N22G | FLN-N22B | 26.5 | 7 | 30 |
| NPT 1" | FLN-N28G | FLN-N28B | 33.2 | 7 | 30 |

PF(G) Thread

| For Gland Size | Cat. No. Grey | Cat. No. Black | (mm) | Height (mm) | Standard Pack (pieces) |
|----------------|---------------|----------------|------|-------------|------------------------|
| G 1/4" | FLN-G07G | FLN-G07B | 19 | 6 | 100 |
| G 1/2" | FLN-G10G | FLN-G10B | 27 | 6 | 100 |
| G 1/2" | FLN-G12G | FLN-G12B | 27 | 6 | 100 |
| G 1/2" | FLN-G16G | FLN-G16B | 27 | 6 | 100 |
| G 3/4" | FLN-G22G | FLN-G22B | 36 | 7 | 100 |
| G 1" | FLN-G28G | FLN-G28B | 46 | 7 | 50 |
| G 1 1/4" | FLN-G36G | FLN-G36B | 50 | 8 | 50 |
| G 1 1/2" | FLN-G42G | FLN-G42B | 65 | 8 | 50 |
| G 2" | FLN-G48G | FLN-G48B | 70 | 8 | 50 |



BRASS LOCK NUTS




In certain applications, installing conduit glands directly on enclosure or equipment wall surfaces is not possible as the entry holes are not threaded. In such situations Brass Lock Nuts are used to secure the cable glands.


Technical Details :

| | |
|-------------------|----------------------|
| Material | Brass, Nickel Plated |
| Threads available | Pg, Metric |

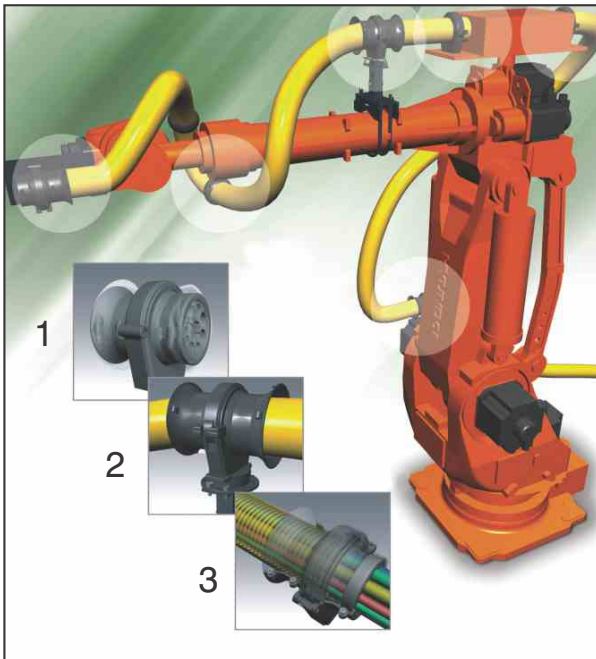
Pg Threads

| For Gland Size | Cat. No. |  (mm) | Height (mm) | Standard Pack (pieces) |
|----------------|----------|--|-------------|------------------------|
| Pg 7 | BSL-01 | 15 | 2.8 | 50 |
| Pg 9 | BSL-02 | 18 | 2.8 | 50 |
| Pg 11 | BSL-03 | 21 | 3.0 | 50 |
| Pg 13.5 | BSL-04 | 23 | 3.0 | 50 |
| Pg 16 | BSL-05 | 26 | 3.0 | 25 |
| Pg 21 | BSL-06 | 32 | 3.5 | 25 |
| Pg 29 | BSL-07 | 41 | 4.0 | 20 |
| Pg 36 | BSL-08 | 51 | 5.0 | 15 |
| Pg 42 | BSL-09 | 60 | 5.0 | 12 |
| Pg 48 | BSL-10 | 64 | 5.5 | 12 |

Metric Threads

| For Gland Size | Cat. No. |  (mm) | Height (mm) | Standard Pack (pieces) |
|----------------|----------|--|-------------|------------------------|
| M 12 x 1.5 | BMBL-01 | 15 | 2.8 | 50 |
| M 16 x 1.5 | BMBL-02 | 19 | 3.0 | 50 |
| M 20 x 1.5 | BMBL-03 | 24 | 3.5 | 50 |
| M 25 x 1.5 | BMBL-04 | 30 | 4.0 | 25 |
| M 32 x 1.5 | BMBL-05 | 36 | 5.0 | 25 |
| M 40 x 1.5 | BMBL-06 | 46 | 5.0 | 20 |
| M 50 x 1.5 | BMBL-07 | 60 | 5.0 | 15 |
| M 63 x 1.5 | BMBL-08 | 70 | 5.0 | 12 |

CABLE PROTECTION SYSTEM FOR ROBOTS: ROBO-KIT



ROBO-KIT is a specially designed cable protection system for robots. The system allows for friction and interference free movement of cables connected to the robots. This system if used, allows for free movement of the robot while substantially enhancing the life of the cables.

The system consists of various components (shown below) which are assembled together to provide various different types of joints and terminations for the handling of the data and power cables of the robot as shown in figures 1, 2 & 3.

| Product | Description / Part No. | Conduit Size | Width | Height | Length | Outside Diameter |
|---------|-------------------------------|--------------|--|--------------|--|------------------|
| | Abrasion Protector RKT | 56 70 | 40.0 45.0 | 91.5 105 | - | 91.5 105 |
| | Clamp RKC | 56 70 | 30.0 34.0 | 115 138 | 120.3 145 | 100 126 |
| | Tube Ball Joint RKS | 56 70 | 108 132 | 105.5 120 | 105.5 120 | 105.5 120 |
| | Tube Ball Joint Sleeve RKD | 56 70 | 130 154 | 105.5 120 | 105.5 120 | 105.5 120 |
| | Strain Relief Insert RKRC | 56 70 | 43 44 | 86.0 104 | - | 86.0 104 |
| | Strain Relief Insert RKSC | 56 70 | 20.6 20.6 | 68.3 82 | - | 68.3 82 |
| | Rotating Connector RKR | 56 70 | 98.0 98.0 | 42.0 42.0 | - | 98.0 98.0 |
| | Cable Manager VCG | 56 70 | 20.6 20.6 | 64.1 77.8 | - | 64.1 77.8 |
| | Conduits PAR | 56 70 | Internal Dia.(mm) Internal Dia.(mm) | 56.3 70.0 | External Dia.(mm) External Dia.(mm) | 67.2 82.5 |