

COMPLEMENT THE DESIGN AND SAFETY OF YOUR CABLING SYSTEM

No system with cable glands can be complete without the proper range of cable gland accessories.

Some of these accessories like lock nuts, reducers and enlargers are necessary from the point of view of ease of installation, while other accessories like blind stops and protection tabs ensure that proper IP protection class is maintained even in the absence of the cable glands or cables. In addition to the above accessories like multi-hole sealing inserts ensure proper cable management when multiple cables are made to pass through a single cable gland.

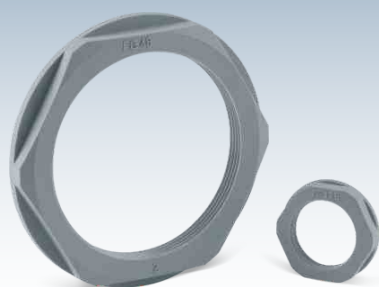
Controlwell offers the complete range of accessories for every single type of cable gland ensuring that we help you protect - connect - simplify.



CABLE GLAND ACCESSORIES

ADDED CONVENIENCE AND PROTECTION

www.controlwell.com



POLYAMIDE LOCK NUTS



In certain applications, installing cable glands directly on enclosure or equipment wall surfaces is not possible. In such situations Hexagonal Lock Nuts are used to secure cable glands. They are manufactured according to the requirement of DIN 46320.

Technical Details :	
Material	Polyamide 6 30% glass fibre reinforced
Colour	RAL 7001 (Grey) RAL 9005 (Black) RAL 7035 (L. Grey on request)
Temperature Range	-20°C to +100°C Continuous -30°C to +150°C Intermittant
Threads available	Pg, Metric & NPT

Pg Thread - DIN 40430

For Gland Size	Cat. No. Grey	Cat. No. Black	⌀ (mm)	Height (mm)	Standard Pack (pieces)
Pg 7	BL-01	BL-21	19	5	50
Pg 9	BL-02	BL-22	22	5	50
Pg 11	BL-03	BL-23	24	5	50
Pg 13.5	BL-04	BL-24	27	6	50
Pg 16	BL-05	BL-25	30	6	50
Pg 21	BL-06	BL-26	36	7	25
Pg 29	BL-07	BL-27	46	7	20
Pg 36	BL-08	BL-28	60	8	10
Pg 42	BL-09	BL-29	65	8	10
Pg 48	BL-10	BL-30	70	8	10

Metric Thread - EN 60423

For Gland Size	Cat. No. Grey	Cat. No. Black	⌀ (mm)	Height (mm)	Standard Pack (pieces)
M 12 x 1.5	BML-0S	BML-2S	18	5	100
M 16 x 1.5	BML-01	BML-21	22	5	50
M 20 x 1.5	BML-02	BML-22	26	6	50
M 25 x 1.5	BML-03	BML-23	32	6	25
M 32 x 1.5	BML-04	BML-24	41	7	25
M 40 x 1.5	BML-05	BML-25	50	7	10
M 50 x 1.5	BML-06	BML-26	60	8	10
M 63 x 1.5	BML-07	BML-27	75	8	10

NPT Thread - ANSI B 1.20.1

For Gland Size	Cat. No. Grey	Cat. No. Black	⌀ (mm)	Height (mm)	Standard Pack (pieces)
NPT 3/8"	BPL-01	BPL-21	22	5	50
NPT 1/2"	BPL-02	BPL-22	27	5	50
NPT 3/4"	BPL-03	BPL-23	33	5	25
NPT 1"	BPL-04	BPL-24	42	6	20



In certain applications, installing cable glands directly on enclosure or equipment wall surfaces is not possible. In such situations Lock Nuts are used to secure cable glands.

Technical Details :	
Material	Brass, Nickel Plated / Stainless Steel
Threads available	Pg, Metric - Brass / Stainless Steel NPT - Brass

STANDARD LOCK NUTS

BRASS / STAINLESS STEEL



Pg Threads

For Gland Size	Cat. No. Brass	Cat. No. Stainless Steel	⌘ (mm)	Height (mm)	Standard Pack (pieces)
Pg 7	BSL-01	BSL-01 (INOX)	15	2.8	100
Pg 9	BSL-02	BSL-02 (INOX)	18	2.8	100
Pg 11	BSL-03	BSL-03 (INOX)	21	3.0	100
Pg 13.5	BSL-04	BSL-04 (INOX)	23	3.0	100
Pg 16	BSL-05	BSL-05 (INOX)	26	3.0	100
Pg 21	BSL-06	BSL-06 (INOX)	32	3.5	100
Pg 29	BSL-07	BSL-07 (INOX)	41	4.0	50
Pg 36	BSL-08	BSL-08 (INOX)	51	5.0	25
Pg 42	BSL-09	BSL-09 (INOX)	60	5.0	10
Pg 48	BSL-10	BSL-10 (INOX)	64	5.5	10

Metric Threads

For Gland Size	Cat. No. Brass	Cat. No. Stainless Steel	⌘ (mm)	Height (mm)	Standard Pack (pieces)
M 12 x 1.5	BMBL-01	BMBL-01 (INOX)	15	2.8	100
M 16 x 1.5	BMBL-02	BMBL-02 (INOX)	19	3.0	100
M 20 x 1.5	BMBL-03	BMBL-03 (INOX)	24	3.5	100
M 25 x 1.5	BMBL-04	BMBL-04 (INOX)	30	4.0	100
M 32 x 1.5	BMBL-05	BMBL-05 (INOX)	36	5.0	50
M 40 x 1.5	BMBL-06	BMBL-06 (INOX)	46	5.0	50
M 50 x 1.5	BMBL-07	BMBL-07 (INOX)	60	5.0	10
M 63 x 1.5	BMBL-08	BMBL-08 (INOX)	70	6.0	10
M 72 x 2	BMBL-09	BMBL-09	77	7.0	10
M 75 x 2	BMBL-10	BMBL-10	80	7.0	5
M 80 x 2	BMBL-11	BMBL-11	90	8.0	5
M 85 x 2	BMBL-12	BMBL-12	95	8.0	5
M 90 x 2	BMBL-13	BMBL-13	100	8.0	5

NPT Threads

For Gland Size	Cat. No. Brass		⌘ (mm)	Height (mm)	Standard Pack (pieces)
NPT 3/8"	BPFL-01		22	5	50
NPT 1/2"	BPFL-02		27	5	50
NPT 3/4"	BPFL-03		33	5	50
NPT 1"	BPFL-04		43	5	25



EMC BRASS LOCK NUTS




These lock nuts are specifically designed for use with EMC cable glands. These are manufactured with special notches on their corners. On tightening against the body on which the gland is being installed, the notches chip the paint of the body and make excellent electrical contact with the bare metal surface which acts as the grounding for the cable.


Technical Details :

Material	Brass, Nickel Plated
Threads available	Pg, Metric, NPT

Pg Threads

For Gland Size	Cat. No.	 (mm)	Height (mm)	Standard Pack (pieces)
Pg 7	BSEL-01	15	3.3	50
Pg 9	BSEL-02	18	3.3	50
Pg 11	BSEL-03	21	3.5	50
Pg 13.5	BSEL-04	23	3.5	50
Pg 16	BSEL-05	26	3.5	25
Pg 21	BSEL-06	32	4.0	25
Pg 29	BSEL-07	41	4.6	20
Pg 36	BSEL-08	51	5.6	15
Pg 42	BSEL-09	60	5.6	12
Pg 48	BSEL-10	64	6.1	12

Metric Threads

For Gland Size	Cat. No.	 (mm)	Height (mm)	Standard Pack (pieces)
M 12 x 1.5	BMEL-01	15	3.3	50
M 16 x 1.5	BMEL-02	19	3.5	50
M 20 x 1.5	BMEL-03	24	3.6	50
M 25 x 1.5	BMEL-04	30	3.6	25
M 32 x 1.5	BMEL-05	36	4.0	25
M 40 x 1.5	BMEL-06	46	4.6	20
M 50 x 1.5	BMEL-07	60	5.6	15
M 63 x 1.5	BMEL-08	70	6.7	12

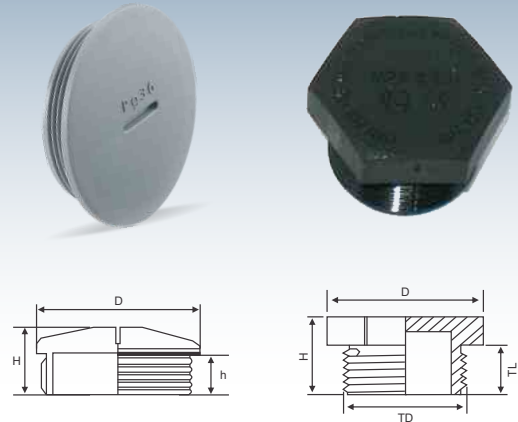


Blind Stops made of Polyamide 6 are used wherever threads previously cut must be closed for preventing dust, dirt and foreign matters from entering the enclosure or equipment. Flat washers of Neoprene are provided on the threaded part to get the IP 68 protection. They are also available in Hexagonal shape.

Technical Details :

Material	Polyamide 6
Colour	RAL 7001 (Grey) RAL 9005 (Black) RAL 7035 (L. Grey on request)
Threads available	Pg, Metric
Protection Class	IP 68
Temperature Range	-20° C to +100° C Continuous -30° C to +150° C Intermittant

STANDARD POLYAMIDE BLIND STOPS



Pg Thread in Polyamide (Circular)

Size	Cat. No. Black	Cat. No. Grey	Total Height H (mm)	Thread Diameter TD (mm)	Thread Length TL (mm)	Standard Pack (pieces)
Pg 7	BBS-21	BBS-01	8.0	12.5	6	100
Pg 9	BBS-22	BBS-02	8.5	15.2	6	100
Pg 11	BBS-23	BBS-03	8.5	18.6	6	50
Pg 13.5	BBS-24	BBS-04	8.5	20.4	6	50
Pg 16	BBS-25	BBS-05	9.0	22.5	6	50
Pg 21	BBS-26	BBS-06	12.0	28.3	8	25
Pg 29	BBS-27	BBS-07	11.5	37.0	8	25
Pg 36	BBS-28	BBS-08	14.0	47.0	10	25
Pg 42	BBS-29	BBS-09	16.0	54.0	10	20
Pg 48	BBS-30	BBS-10	16.0	59.3	10	20

Metric Thread in Polyamide (Circular)

Size	Cat. No. Black	Cat. No. Grey	Total Height H (mm)	Thread Diameter TD (mm)	Thread Length TL (mm)	Standard Pack (pieces)
M 12 x 1.5	BMBS-2S	BMBS-0S	10.5	12	6	100
M 16 x 1.5	BMBS-21	BMBS-01	11.5	16	7	50
M 20 x 1.5	BMBS-22	BMBS-02	12.5	20	7	50
M 25 x 1.5	BMBS-23	BMBS-03	15.0	25	10	50
M 32 x 1.5	BMBS-24	BMBS-04	14.0	32	8	25
M 40 x 1.5	BMBS-25	BMBS-05	12.5	40	6	10
M 50 x 1.5	BMBS-26	BMBS-06	14.0	50	10	10
M 63 x 1.5	BMBS-27	BMBS-07	19.0	63	13	10

Metric Thread in Polyamide (Hexagonal)

Size	Cat. No. Black	D (mm)	H (mm)	Thread Diameter TD (mm)	Thread Length TL (mm)	Standard Pack (pieces)
M 12 x 1.5	BMBS-2S(A)	17	15	12	10	50
M 16 x 1.5	BMBS-21(A)	22	19.3	16	15	50
M 20 x 1.5	BMBS-22(A)	26	21	20	15	50
M 25 x 1.5	BMBS-23(A)	32	20.8	25	15	50
M 32 x 1.5	BMBS-24(A)	41.5	22.8	32	15	10
M 40 x 1.5	BMBS-25(A)	53	26.5	40	18	10
M 50 x 1.5	BMBS-26(A)	63.5	27.5	50	18	10
M 63 x 1.5	BMBS-27(A)	80	27.5	63	18	10

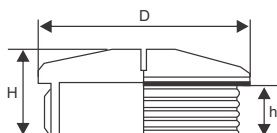


BRASS BLIND STOPS



Blind Stops made of Brass are used wherever threads previously cut must be closed for preventing dust, dirt and foreign matters from entering the enclosure or equipment.

Technical Details :	
Material	Brass, Nickel Plated
Temperature Range	-40°C to +135°C
Threads available	Pg, Metric
Protection Class	IP 67



Pg Thread in Brass

Size	Cat. No.	H (mm)	D (mm)	h (mm)	Standard Pack (pieces)
Pg 7	GBBS-01	7.5	15	5	50
Pg 9	GBBS-02	8	18	5	50
Pg 11	GBBS-03	8	22	5	50
Pg 13.5	GBBS-04	9	24	6	50
Pg 16	GBBS-05	9	26	6	50
Pg 21	GBBS-06	10	32	6	25
Pg 29	GBBS-07	12	40	8	25
Pg 36	GBBS-08	15	50	9	20
Pg 42	GBBS-09	16	57	10	20
Pg 48	GBBS-10	16	64	10	20

Metric Thread in Brass

Size	Cat. No.	H (mm)	D (mm)	h (mm)	Standard Pack (pieces)
M 12 x 1.5	GBMBS-0S	7.5	14	5	50
M 16 x 1.5	GBMBS-01	8	18	5	50
M 20 x 1.5	GBMBS-02	9.5	22	6	50
M 25 x 1.5	GBMBS-03	11	28	7	50
M 32 x 1.5	GBMBS-04	12	35	8	25
M 40 x 1.5	GBMBS-05	13	44	8	25
M 50 x 1.5	GBMBS-06	15	54	9	20
M 63 x 1.5	GBMBS-07	16	67	10	20



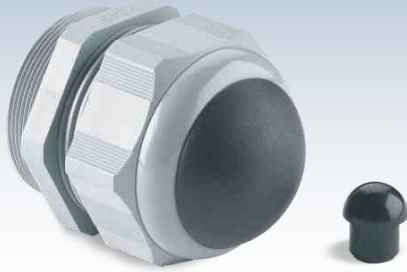
These inserts are used in applications where sealing and strain relief protection is required for multiple cables passing through a single cable gland.

Technical Details :	
Material	Perbunan (NBR)
Colour	RAL 9005 (Black)
Application	For Pg, Metric and NPT threaded Cable Glands

MULTI-HOLE SEALING INSERTS



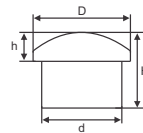
For Cable Gland Size in Polyamide	Cat. No.	Number of Holes	Diameter of Hole (mm)	Standard Pack (pieces)
Pg 7 / M 12 (3 - 6.5)	BMS-01A	2	1	50
Pg 9 / M 16 (4 - 8)	BMS-02A	2	3	50
Pg 9 / M 16 (4 - 8)	BMS-02B	3	2	50
Pg 9 / M 16 (4 - 8)	BMS-02C	4	2	50
Pg 9 / M 16 (4 - 8)	BMS-02D	4	3	50
Pg 9 / M 16 (4 - 8)	BMS-02E	2	4	50
Pg 11 / M 16 (5 - 10)	BMS-03A	2	4	50
M 16 / EX (5 - 10)	BMS-03AA	2	4	50
Pg 11 / M 16 (5 - 10)	BMS-03B	2	4.5	50
Pg 11 / M 16 (5 - 10)	BMS-03C	3	4	50
Pg 11 / M 16 (5 - 10)	BMS-03D	3	5	50
Pg 11 / M 16 (5 - 10)	BMS-03E	4	3.5	50
Pg 13.5 / M 20 (6 - 12)	BMS-04A	2	6	50
Pg 13.5 / M 20 (6 - 12)	BMS-04B	3	4	50
Pg 13.5 / M 20 (6 - 12)	BMS-04C	3	5	50
Pg 16 / M 20 (10 - 14)	BMS-05A	2	4	50
Pg 16 / M 20 (10 - 14)	BMS-05B	2	7	50
Pg 16 / M 20 (10 - 14)	BMS-05C	3	4	50
Pg 16 / M 20 (10 - 14)	BMS-05D	3	6	50
Pg 16 / M 20 (10 - 14)	BMS-05E	4	6	50
Pg 16 / M 20 (10 - 14)	BMS-05F	4	3.5	50
M 25 (EU) (11 - 17)	BMS-56	2	8	50
Pg 21 / M 25 (13 - 18)	BMS-06A	2	7	50
Pg 21 / M 25 (13 - 18)	BMS-06B	2	8	50
Pg 21 / M 25 (13 - 18)	BMS-06C	2	9	50
Pg 21 / M 25 (13 - 18)	BMS-06D	3	7	50
Pg 21 / M 25 (13 - 18)	BMS-06E	4	7	50
Pg 21 / M 25 (13 - 18)	BMS-06F	3	4	50
Pg 29 / M 32 (18 - 25)	BMS-07A	3	8.5	50
Pg 29 / M 32 (18 - 25)	BMS-07B	5	8.5	50
Pg 29 / M 32 (18 - 25)	BMS-07C	8	5	50
Pg 29 / M 32 (18 - 25)	BMS-07D	2	10.5 / 12	50
Pg 29 / M 32 (18 - 25)	BMS-07E	9	4	50
Pg 29 / M 32 (18 - 25)	BMS-07F	6	7.5	50
Pg 29 / M 32 (18 - 25)	BMS-07G	2	8	50
Pg 29 / M 32 (18 - 25)	BMS-07H	4	8	50
Pg 29 / M 32 (18 - 25)	BMS-07I	4	10	50
Pg 36 / M 40 (22 - 32)	BMS-08A	6	10	50
Pg 36 / M 40 (22 - 32)	BMS-08B	2	11	50
Pg 36 / M 40 (22 - 32)	BMS-08C	8	8	50
Pg 36 / M 40 (22 - 32)	BMS-08D	6	11	50
M 40 (EU) (19 - 28)	BMS-89	4	10	50
Pg 42 / M 50 (30 - 38)	BMS-09A	3	6.7 / 7.3 / 8.6	50
Pg 42 / M 50 (30 - 38)	BMS-09B	8	8	50


POLYAMIDE PROTECTION TABS


Protection Tabs made of Polyamide 6 are used in assembly work for instruments, machines etc., where only Cable Glands are mounted and cable connection is made later. This prevents dust and moisture from penetrating the enclosure or equipment.

Technical Details :

Material	Polyamide 6
Flammability	UL 94 V2
Colour	RAL 9005 (Black)
Temperature Range	-20°C to +80°C
Application	For Pg, Metric and NPT threaded Cable Glands


For Pg Thread Cable Glands

For Cable Gland Size	Cat. No.	H (mm)	D (mm)Ø	h (mm)	d (mm)Ø	Standard Pack (pieces)
Pg 7	BPT-21	10	9.2	3	6.5	100
Pg 9	BPT-22	16	10.5	5	8	50
Pg 11	BPT-23	20.5	13.5	5.5	10	50
Pg 13.5	BPT-24	18	16	8	12	50
Pg 16	BPT-25	18.5	18	8.5	13.5	50
Pg 21	BPT-26	21	22	10	18	25
Pg 29	BPT-27	25	28.5	10	25	25
Pg 36	BPT-28	27.5	37.5	10.5	32	10
Pg 42	BPT-29	33	44.5	13	38	10
Pg 48	BPT-30	39	52	16	44	10

For Metric Thread Cable Glands

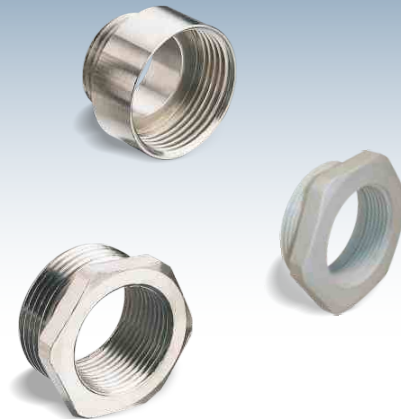
For Cable Gland Size	Cat. No.	H (mm)	D (mm)Ø	h (mm)	d (mm)Ø	Standard Pack (pieces)
M 12	BPM-2S	10	9.2	3	6.5	100
M16 (EU)	BPM-E21	16	10.5	5	8	50
M 16	BPM-21	20.5	13.5	5.5	10	50
M 20/2	BPM-22	18	16	8	12	50
M 20/3	BPM-22L	18.5	18	8.5	13.5	50
M 25 (EU)	BPM-E23	18.5	20	7.5	16.5	50
M 25	BPM-23	21	22	10	18	25
M 32 (EU)	BPM-E24	21	24	9	20.5	25
M 32	BPM-24	25	28.5	10	25	25
M 40 (EU)	BPM-E25	25	32	9	27.5	10
M 40	BPM-25	27.5	37.5	10.5	32	10
M 50	BPM-26	33	44.5	13	38	10
M 63	BPM-27	39	52	16	44	10



These are used for threaded holes on machines or equipment housing which are too large or too small for the necessary glands.

Technical Details :	
Material	Brass Nickel Plated / Polyamide
Colour	Metallic / Light Grey
Threads available	Pg and Metric

BRASS REDUCERS



Pg Thread & Metric Thread Reducers

Size	Cat. No. Brass	Cat. No. Polyamide	External Thread	Internal Thread	Thread Length (mm)	Standard Pack (pieces)
Pg 9 - Pg 7	SBBR P9/P7	-	Pg9	Pg7	7	50
Pg 11 - Pg 9	SBBR P11/P9	-	Pg11	Pg9	8	50
Pg 13.5 - Pg 9	SBBR P13.5/P9	-	Pg13.5	Pg9	8	50
Pg 13.5 - Pg 11	SBBR P13.5/P11	-	Pg13.5	Pg11	9	50
Pg 16 - Pg 11	SBBR P16/P11	BPR P16/11	Pg16	Pg11	9	25
Pg 16 - Pg 13.5	SBBR P16/P13.5	-	Pg16	Pg13.5	9	25
Pg 21 - Pg 13.5	SBBR P21/P13.5	BPR P21/13.5	Pg21	Pg13.5	9	25
Pg 21 - Pg 16	SBBR P21/P16	BPR P21/16	Pg21	Pg16	11.3	25
Pg 29 - Pg 21	SBBR P29/P21	BPR P29/21	Pg29	Pg21	12	10
Pg 36 - Pg 29	SBBR P36/P29	BPR P36/29	Pg36	Pg29	14	10
M 16 - M 12	GBBR M16/M12	-	M16 x 1.5	M12 x 1.5	7	25
M 20 - M 12	GBBR M20/M12	BPR M20/12	M20 x 1.5	M12 x 1.5	8	25
M 20 - M 16	GBBR M20/M16	BPR M20/16	M20 x 1.5	M16 x 1.5	9	25
M 25 - M 16	GBBR M25/M16	BPR M25/16	M25 x 1.5	M16 x 1.5	9	10
M 25 - M 20	GBBR M25/M20	BPR M25/20	M25 x 1.5	M20 x 1.5	10	10
M 32 - M 16	GBBR M32/M16	BPR M32/16	M32 x 1.5	M16 x 1.5	11	10
M 32 - M 20	GBBR M32/M20	BPR M32/20	M32 x 1.5	M20 x 1.5	11	10
M 32 - M 25	GBBR M32/M25	BPR M32/25	M32 x 1.5	M25 x 1.5	11	10
M 40 - M 20	GBBR M40/M20	BPR M40/20	M40 x 1.5	M20 x 1.5	11	10
M 40 - M 25	GBBR M40/M25	BPR M40/25	M40 x 1.5	M25 x 1.5	11	10
M 40 - M 32	GBBR M40/M32	BPR M40/32	M40 x 1.5	M32 x 1.5	11	10
M 50 - M 25	SBBR M50/M25	BPR M50/25	M50 x 1.5	M25 x 1.5	12	10
M 50 - M 32	SBBR M50/M32	BPR M50/32	M50 x 1.5	M32 x 1.5	12	10
M 50 - M 40	SBBR M50/M40	BPR M50/40	M50 x 1.5	M40 x 1.5	12	10
M 63 - M 40	SBBR M63/M40	BPR M63/40	M63 x 1.5	M40 x 1.5	12	5
M 63 - M 50	SBBR M63/M50	BPR M63/50	M63 x 1.5	M50 x 1.5	12	5



BRASS ENLARGERS



These are used for threaded holes on machines or equipment housing which are too large or too small for the necessary glands.

Technical Details :	
Material	Brass Nickel Plated
	Polyamide (On request)
Threads available	Pg and Metric

Pg Thread & Metric Thread Enlargers

Size	Cat. No. Brass	External Thread	Internal Thread	Thread Length (mm)	Standard Pack (pieces)
Pg7 - Pg9	GBBE P7/P9	Pg7	Pg9	5	50
Pg9 - Pg11	GBBE P9/P11	Pg9	Pg11	6	50
Pg9 - Pg13.5	GBBE P9/P13.5	Pg9	Pg13.5	6	50
Pg11 - Pg13.5	GBBE P11/P13.5	Pg11	Pg13.5	6	50
Pg11 - Pg16	GBBE P11/P16	Pg11	Pg16	6	50
Pg13.5 - Pg16	GBBE P13.5/P16	Pg13.5	Pg16	6.5	50
Pg13.5 - Pg21	GBBE P13.5/P21	Pg13.5	Pg21	6.5	50
Pg16 - Pg21	GBBE P16/P21	Pg16	Pg21	6.5	25
Pg21 - Pg29	GBBE P21/P29	Pg21	Pg29	7	25
Pg29 - Pg36	GBBE P29/P36	Pg29	Pg36	8	10
Pg29 - Pg48	GBBE P29/P48	Pg29	Pg48	8	5
Pg36 - Pg42	GBBE P36/P42	Pg36	Pg42	9	5
Pg42 - Pg48	GBBE P42/P48	Pg42	Pg48	10	5
M12 - M16	GBBE M12/M16	M12	M16	5	50
M16 - M20	GBBE M16/M20	M16	M20	5	25
M16 - M25	GBBE M16/M25	M16	M25	6	25
M20 - M25	GBBE M20/M25	M20	M25	6	10
M25 - M32	GBBE M25/M32	M25	M32	7	10
M25 - M40	GBBE M25/M40	M25	M40	7	10
M32 - M40	GBBE M32/M40	M32	M40	8	10
M32 - M50	GBBE M32/M50	M32	M50	8	10
M40 - M50	GBBE M40/M50	M40	M50	8	10
M50 - M63	GBBE M50/M63	M50	M63	9	10



BRASS CONVERTERS



These are used for threaded holes on machines or equipment housing where the threads are to be changed from Pg to Metric or from Metric to Pg.

Technical Details :	
Material	Brass Nickel Plated
Threads available	Pg and Metric

Converters

Size	Cat. No.	External Thread	Internal Thread	Thread Length (mm)	Standard Pack (pieces)
Pg16 - M25	SBBC P16/M25	Pg16	M25	7	50
Pg36 - M32	SBBC P36/M32	Pg36	M32	7	10
Pg36 - M40	SBBC P36/M40	Pg36	M40	7	10
M20 - Pg9	SBBC M20/P9	M20	Pg9	7	10
M20 - Pg13.5	SBBC M20/P13.5	M20	Pg13.5	7	10
M25 - P11	SBBC M25/P11	M25	Pg11	7	10
M32 - P16	SBBC M32/P16	M32	Pg16	7	10
M50 - Pg42	SBBC M50/P42	M50	Pg42	7	10
ET3/4"-M16	SBBC 3/4"/M16	ET3/4"	M16	7	10
ET3/4"-M20	SBBC 3/4"/M20	ET3/4"	M20	7	10



Ventilation Plugs are used for equalizing the pressure inside and outside the enclosure. The same is achieved with the help of a membrane inside the ventilation plug, which allows for gases (air) to pass through it while blocking liquids and particulate solids (dust).

Applications / Benefits :

- 1) These prevent components inside the enclosure from being exposed to pressurized gases when the enclosure heats up. (By virtue of pressure equalization)
- 2) These also prevent generation of vacuum inside the enclosure when a heated enclosure cools off. (e.g. In luminaires)
- 3) These help maintain IP 68 rating of the enclosure while allowing for the above benefits.

Technical Details :	
Material	Polyamide 6 Stainless Steel
Colour	RAL 7035 (Light Grey) RAL 9005 (Black)
Membrane Material	Acrylic copolymer on nylon support
Membrane Feature	Hydrophobic - Oleophobic
O Ring	Nitrile Rubber
Working Temperature	-40° C to +105° C
Protection Class	IP 68-5 Bar



VENTILATION PLUGS

Ventilation Plug in Polyamide

Size	Cat. No. Light Grey	Cat. No. Black	Thread Diameter D (mm)	Thread Length L (mm)	(mm)	Air Permeability lt/hour	Water Intrusion Pressure Bar
M 12 x 1.5	SBVPB-11L	SBVPB-21L	12	10	17	16	0.9
M 16 x 1.5	SBVPF-11	SBVPF-21	16	10	24	42	0.9
M 20 x 1.5	UHBVPE-11	UHBVPE-21	20	10	24	750	0.1
M 40 x 1.5	HBVPX-18S	HBVPX-28S	40	18	-	1350	0.2

Ventilation Plug in Stainless Steel

Size	Cat. No.	Cat. No.	Thread Diameter D (mm)	Thread Length L (mm)	(mm)	Air Permeability lt/hour	Water Intrusion Pressure Bar
M 12 x 1.5	SBBVP-01L	-	12	10	17	16	0.9
M 16 x 1.5	SBBVP-02L	-	16	6	18	16	0.9
M 20 x 1.5	SBBVP-03L	-	20	6	22	16	0.9
M 40 x 1.5	SBBVPX-05	-	40	10	-	120	0.9